

Home plans and elevations may change without notice.

JULIE LATERRA HOMES



Made from Scratch.™

8532 Pit Stop Court, Suite 10
Concord, NC 28027

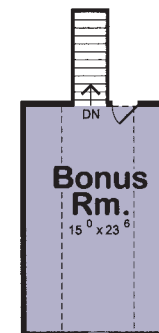
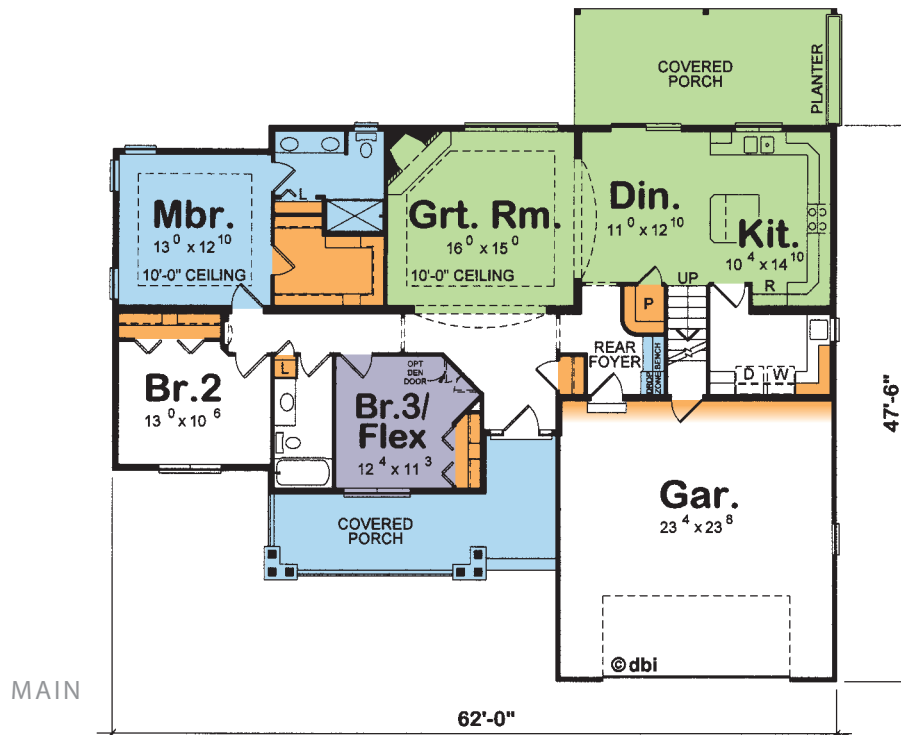
888.200.0030 Toll-free • 704.979.1188 Local
704.979.1180 Fax • www.JulieLaTerraHomes.com



ALTERNATE ELEVATION

The Annabelle

• 1679 Finished Sq. Ft.



Unfinished
Bonus Room
adds 392 Sq. Ft.

Livability at a Glance®

ENTERTAINING

DE-STRESSING

STORING

FLEXIBLE LIVING

How the home *Lives*

Whether reading with kids, visiting your neighbors or relaxing over the first cup of coffee, the Annabelle's front porch is sure to be a source of good times, cherished memories and relaxation. Visual cues alluding to the home's distinctive character include the dormer that bathes the entry in natural light and the artful integration of brick, lap and shake siding.

Views throughout were an important design consideration. From the spacious entry, there are uninterrupted views to the great room's fireplace and out the back of the home. Looking down the hall brings an arched display niche into focus. And no matter where you're standing in the home, you are greeted by natural light.

Realizing that situations are always changing, the Annabelle was designed to either be a 3-bedroom home or 2 bedrooms plus a den/home office accessed off the entry. Eliminating the closet and walls opens this space up for the ideal music room for the accomplished pianist in your household. Flexibility is presented by available space over the garage, conveniently accessed near the kitchen.

Graceful arched openings, a 10-foot ceiling and wall of windows make the great room a natural for entertaining. This space flows effortlessly into the kitchen/dining area, offering views of the corner fireplace throughout. A spacious covered porch enhances outdoor gatherings, while also keeping grilling plans alive even if Mother Nature doesn't cooperate.

Storage and organization go hand in hand in this ambidextrous design! Extra storage is afforded along the back of the deep garage. Cabinets in the laundry room are more than adequate for all of your cleaning supplies. The kitchen offers well-planned storage, anchored by a walk-in pantry. Bathroom storage is always appreciated, and closets plus vanity cabinetry help you keep everything right where you need it.

You'll appreciate the Annabelle's design when you're trying to get some extra sleep. The bedroom wing offers maximum privacy from the entertaining areas, allowing you to rest undisturbed—even if other household members are night owls. This master suite's oversized shower can also be outfitted with multiple shower heads or even a shower system for your very own spa—at home!

The Annabelle

Personalize your new home

- A Slate or Flagstone Patio Dresses Up a Relaxing Outdoor Room
- Bonus Room Opportunity for Bedroom, Family/Media Room, or Home Office
- Open Up the Flex Space & Entertain in a Music Room Dressed With Columns
- Choose Clever Garage Solutions for Sports Equipment, Gardening, or Storage
- Save Time With Organized and Beautiful Kitchen Storage Solutions
- Warm Up to Gorgeous Fireplace Mantles & Surrounds
- Glass Mosaic Tile Backsplashes Lend Personality to Featured Walls
- Box, Bay or a Cozy Window Seat Option Lets in Natural Light
- Indulge Yourself With Multiple Shower Heads
- Let a Warm Heat Lamp Welcome You as You Step Out of Your Shower
- Be Creative With a Unique Bath Tile Shower Surround
- Be Original & Create Drama With Tray/Volume Ceiling Options

Make your home *Distinctive*

- Extend Your Season With a Distinctive Screened Porch
- Make Your Home Unique with Stacked Stone Façade & Cedar Shake Siding
- Upgrade Your Curb Appeal with Hip Roof Lines & Interesting Roof Details
- Ask about Adding Carriage Style Garage Doors

Julie's *Favorites*

- Gracious Interior Columns – Square or Round, on Half Walls or In Multiples

YOUR EXCLUSIVE WOMAN-CENTRIC AND BOOMER-CENTRIC BUILDER



8532 Pit Stop Court, Suite 10 • Concord, NC 28027 • www.JulieLaTerraHomes.com

888.200.0030 Toll-free • 704.979.1188 Local • 704.979.1180 Fax



JULIE
LATERRA
HOMES

Made from Scratch.™