



Home plans and elevations may change without notice.

JULIE LATERRA HOMES



Made from Scratch.™

8532 Pit Stop Court, Suite 10
Concord, NC 28027

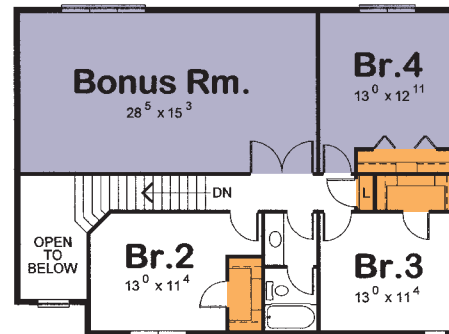
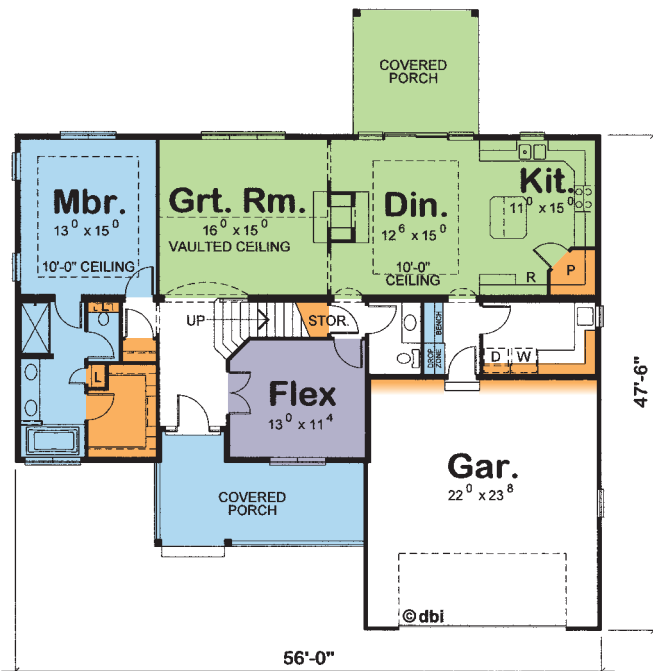
888.200.0030 Toll-free • 704.979.1188 Local
704.979.1180 Fax • www.JulieLaTerraHomes.com



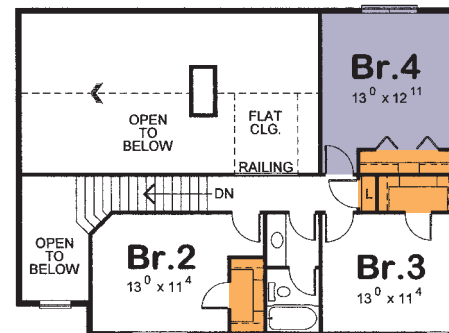
ALTERNATE ELEVATION

The Rogan

Main 1570 Sq.Ft. • Second 734 Sq.Ft. • Total 2304 Sq.Ft.



OPTIONAL
BONUS ROOM
ADDS 457 SQ. FT.



SECOND

Livability at a Glance®

ENTERTAINING

DE-STRESSING

STORING

FLEXIBLE LIVING

How the home *Lives*

Welcome! Looking much larger than 2,103 square feet, the Rogan artfully places lap and shake siding atop substantial masonry accents, then adds a columned front porch to greet family and friends. Careful attention to detail is evident in the trim, louver, half-round windows and even the stylish garage door chosen for this home.

Inside, the home beckons everyone to the open gathering areas. Sunlight floods this area, utilizing a see-through fireplace to provide room definition without walls. Special ceiling details in the great room and dining area add drama. There's a covered porch just off the dining area—ideal for barbecuing and entertaining.

Storage is a hallmark of homes designed for how we actually "live." In the Rogan, the garage was made deeper to allow for storage. Coming into the home through the rear foyer, there's a handy bench with storage below for shoes and boots, plus hooks above for jackets. There's also our innovative "drop zone"—with its recharging center for your personal electronics and organization for keys, mail, briefcases and umbrellas, etc.

Considerable storage is found in the laundry room, which solves some of the "bulk item" storage issues. Generous cabinets, a walk-in pantry and island storage keep this kitchen organized and presentable. Opposite the powder bath, another storage closet is perfect for a vacuum cleaner and the trusty Swiffer® or it may become a pet center, complete with pet food dispenser, kennel or pet bed.

The master suite pampers you with plentiful storage, including a linen closet plus a linen cabinet. The walk-in closet offers plenty of hanging space plus shelves, eliminating stress associated with inadequate closets. The entire master suite was designed to de-stress, from the 5-foot shower (be sure to ask about multiple shower heads!) to double sinks that help smooth conflicting schedules. Perhaps you envision a long, hot soak. This bathroom is sure to please!

Standing in the 2-story entry, the room to your right presents numerous uses. With French doors, this area can be closed off, ideal for a home office or den. Others will see this as a music room, eliminating the wall and doors off the entry. Upstairs, there's the option of adding a fourth bedroom with a huge bonus room. How would you use that space? A family room? Game room? Home theatre? We can tailor that space however you like!

The Rogan

Personalize your new home

- Enclose the Porch for a Restful Retreat & Serenity
- Entertain with Bonus Room Options for Family/Game Room or Home Theatre
- Create a Convenient Home Office That's Just Right for You
- An In-law Suite Can Be the Perfect Solution in the Flex Space
- Inspirational Cabinets Help You Organize Better
- Choose a Double Cabinet Island for the Kitchen
- Opt for the Split Cooking Wall Oven Option
- Offer Hospitality With a Wet Bar & Wine Rack for Easy Entertaining
- Think About Multiple Shower Heads in the Master Bath
- Luxurious Faucets Come in Several Designer Finishes
- Beautiful Fireplace Surround, Hearth and Mantel Choices
- Choose a Stained Open Stair Rail with Painted Newel Post

Make your home *Distinctive*

- Add Unique Outdoor Design Details and Roof Accents
- Exterior Stone Accents Echo Vintage Charm
- Accent With Decorative Nautical Window Accents
- Ask How to Make Your Home Unique with Carriage Style Garage Doors

Julie's *Favorites*

- Eliminate America's #1 Stress – Getting Everyone Out the Door on Time - with a Rear Foyer Entry Complete with an Innovative Drop Zone & Recharging Center for Personal Electronics & an Organization Center for Keys, Mail, Umbrellas, etc.

YOUR EXCLUSIVE WOMAN-CENTRIC AND BOOMER-CENTRIC BUILDER



8532 Pit Stop Court, Suite 10 • Concord, NC 28027 • www.JulieLaTerraHomes.com

888.200.0030 Toll-free • 704.979.1188 Local • 704.979.1180 Fax



JULIE
LATERRA
HOMES

Made from Scratch.™